



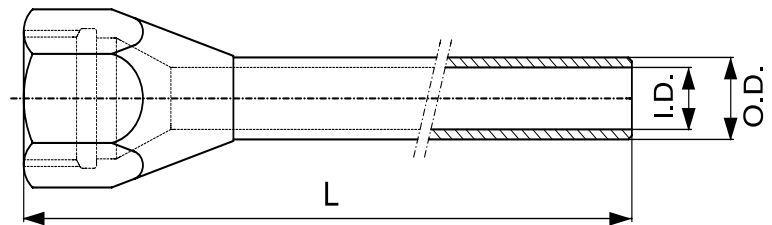
ConProTec has developed a complete line of high quality, low cost shrouds to be used with STATOMIX® static mixers on all meter mix machines.

The higher pressures associated with meter, mix and dispensing equipment require the use of STATOMIX® Shrouds. If a shroud is not used, the mixer housing can expand, allowing the catalyst or resin components to bypass the mixer elements and streamline down the inner housing wall, preventing an optimal mixture.

Additionally, ConProTec recommends the use of STATOMIX® Shrouds at all times for safety reasons in case the operating pressure exceeds the static mixer's pressure rating.

TECHNICAL DATA

- Material: Aluminum
- Finish: Anodized
- Thread: 7/8" - 9 or 7/8" - 14 Thread



Part Number	For Mixer Type	Inner Dia. I.D. (Inches)	Inner Dia. I.D. (mm)	Outer Dia. O.D. (Inches)	Outer Dia. O.D. (mm)	Length L (Inches)	Length L (mm)
FOR 7/8" - 9 THREADS							
SH 05-24-09	ME or MS 05-24	.323	8.2	.453	11.5	5.748	146.0
SH 05-32-09	ME or MS 05-32	.323	8.2	.453	11.5	7.283	185.0
SH 06-24-09	ME or MS 06-24	.402	10.2	.551	14.0	7.067	179.5
SH 06-32-09	ME or MS 06-32	.402	10.2	.551	14.0	8.996	228.5
SH 06-48-09	ME or MS 06-48	.421	10.7	.591	15.0	12.953	329.0
SH 06-56-09	MS 06-56	.421	10.7	.591	15.0	15.093	594.2
SH 08-24-09	ME or MS 08-24	.480	12.2	.630	16.0	8.465	215.0
SH 08-32-09	ME or MS 08-32	.480	12.2	.630	16.0	10.984	279.0
SH 10-24-09	ME or MS 10-24	.559	14.2	.748	19.0	10.453	265.5
SH 10-32-09	ME or MS 10-32	.559	14.2	.748	19.0	13.445	341.5
SH 13-24-09	ME or MS 13-24	.667	17.2	.906	23.0	11.043	280.5
SH 13-32-09	ME or MS 13-32	.667	17.2	.906	23.0	14.390	365.5
SH 10-44-09	ME or MS 1012-0832	.559 - .480	14.2 - 12.2	.748 - .630	19.0 - 16.0	15.787	401.0
SH 13-44-09	ME or MS 1312-1032	.667 - .559	17.2 - 14.2	.906 - .748	23.0 - 19.0	19.803	503.0
FOR 7/8" - 14 THREADS							
SH 05-24-14	ME or MS 05-24	.323	8.2	.453	11.5	5.748	146.0
SH 05-32-14	ME or MS 05-32	.323	8.2	.453	11.5	7.283	185.0
SH 06-24-14	ME or MS 06-24	.402	10.2	.551	14.0	7.067	179.5
SH 06-32-14	ME or MS 06-32	.402	10.2	.551	14.0	8.996	228.5
SH 06-48-14	ME or MS 06-48	.421	10.7	.591	15.0	12.953	329.0
SH 06-56-14	MS 06-56	.421	10.7	.591	15.0	15.093	594.2
SH 08-24-14	ME or MS 08-24	.480	12.2	.630	16.0	8.465	215.0
SH 08-32-14	ME or MS 08-32	.480	12.2	.630	16.0	10.984	279.0
SH 10-24-14	ME or MS 10-24	.559	14.2	.748	19.0	10.453	265.5
SH 10-32-14	ME or MS 10-32	.559	14.2	.748	19.0	13.445	341.5
SH 13-24-14	ME or MS 13-24	.667	17.2	.906	23.0	11.043	280.5
SH 13-32-14	ME or MS 13-32	.667	17.2	.906	23.0	14.390	365.5
SH 10-44-14	ME or MS 1012-0832	.559 - .480	14.2 - 12.2	.748 - .630	19.0 - 16.0	15.787	401.0
SH 13-44-14	ME or MS 1312-1032	.667 - .559	17.2 - 14.2	.906 - .748	23.0 - 19.0	19.803	503.0